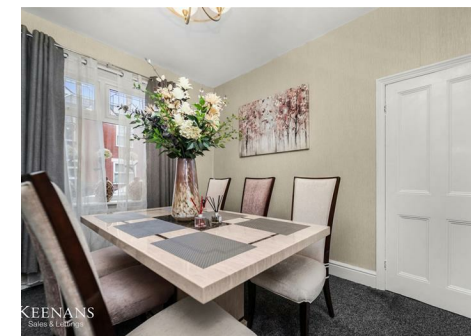
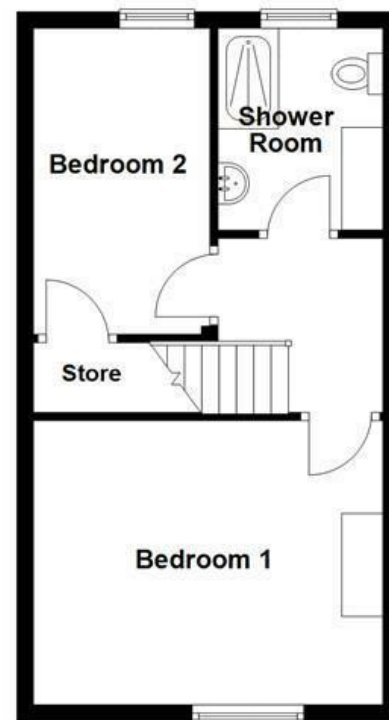


Ground Floor



First Floor



Energy Efficiency Rating		
	Current	Potential
Very energy efficient - lower running costs		
(92 plus) A		
(81-91) B		
(69-80) C		
(55-68) D		
(39-54) E		
(21-38) F		
(1-20) G		
Not energy efficient - higher running costs		
	53	72
England & Wales	EU Directive 2002/91/EC	

These particulars, whilst believed to be accurate are set out as a general outline only for guidance and do not constitute any part of an offer or contract. Intending purchasers should not rely on them as statements of representation of fact, but must satisfy themselves by inspection or otherwise as to their accuracy. No person in this firms employment has the authority to make or give any representation or warranty in respect of the property.

Charles Street, Manchester, M27 9UR

£200,000

SPACIOUS TWO BEDROOM HOME

Located on the charming Charles Street in Swinton, Manchester, this delightful terraced house offers a perfect blend of comfort and practicality. Upon entering, you are welcomed by a generous reception room that provides an inviting space for relaxation and social gatherings. Adjacent to this, the dining room creates an ideal setting for family meals and entertaining guests.

The well-equipped kitchen is designed to meet all your culinary needs, making meal preparation a pleasure. This home boasts two well-proportioned double bedrooms, each offering ample space and natural light, ensuring a restful retreat at the end of the day. The well-appointed bathroom adds to the convenience of this property, catering to all your daily needs.

Outside, the rear yard is designed for low maintenance, allowing you to enjoy your outdoor space without the burden of extensive upkeep. This property is perfect for those seeking a comfortable home in a friendly neighbourhood, with easy access to local amenities and transport links. Whether you are a first-time buyer or looking to downsize, this charming terraced house on Charles Street is a wonderful opportunity not to be missed.

For the latest upcoming properties, make sure you are following our Instagram @keenans.ea and Facebook @keenansestateagents

Charles Street, Manchester, M27 9UR

£200,000

 2  1  1  E

- Spacious Mid Terrace Property
 - Fitted Kitchen
 - On Street Parking
 - EPC Rating E
- Two Bedrooms
 - Perfect First Home
 - Tenure Leasehold
- Three Piece Shower Room
 - Low Maintenance
 - Council Tax Band A

Ground Floor

Paved forecourt.

Entrance Vestibule

3'5 x 3'1 (1.04m x 0.94m)
Composite double glazed frosted front door and door to hall.

Hall

10'8 x 3'1 (3.25m x 0.94m)
Central heating radiator, doors leading to two reception rooms and stairs to first floor.

Reception Room One

11'6 x 10'7 (3.51m x 3.23m)
UPVC double glazed window and central heating radiator.

Reception Room Two

14'2 x 12'2 (4.32m x 3.71m)
UPVC double glazed window, central heating radiator, living flame gas fire with marble mantel and surround, under stairs storage and door to kitchen.

Kitchen

12'9 x 6'11 (3.89m x 2.11m)
Two UPVC double glazed windows, central heating radiator, range of wall and base units with laminate work surfaces, tiled splashback, stainless steel sink and drainer with traditional taps, space for oven, integrated extractor hood, space for fridge freezer, plumbing for washing machine, boiler, tiled effect lino flooring and composite double glazed frosted door to rear.

First Floor

Landing

6'10 x 6'8 (2.08m x 2.03m)
Doors leading to two bedrooms and bathroom.

Bedroom One

14'2 x 11'6 (4.32m x 3.51m)
UPVC double glazed window and central heating radiator.

Bedroom Two

12'3 x 7'1 (3.73m x 2.16m)
UPVC double glazed window, central heating radiator and over stairs storage.

Shower Room

8'1 x 6'8 (2.46m x 2.03m)
UPVC double glazed frosted window, central heating radiator, dual flush WC, pedestal wash basin with traditional taps, direct feed shower enclosed, partially tiled elevations and wood effect lino flooring.

External

Rear

Enclosed yard with paving.

Front



Tel: 01617939622

www.keenans-estateagents.co.uk